

22682VIC Certificate II in Electrotechnology Studies (Pre-vocational)

The aim: This course provides the opportunity for those wishing to gain employment in the electrotechnology industry with the required prerequisite knowledge and skills to gain access to a wide range of apprenticeships offered within this industry.

In particular, the course provides training in basic electrical theory, electrical workshop practices, wiring and basic installation skills, the use of hand and power tools and an overview of the electrotechnology industry and the range of occupations within it.

EDUCATION

CREDIT IN THE VCE

Students who complete this certificate are eligible for four units credit towards their VCE: two units at Units 1 and 2 and a Units 3 and 4 sequence.

Students who receive a Units 3 and 4 sequences for VCE VET Electrotechnology will be eligible for an increment towards their ATAR (10% of the average of the primary four scaled studies). The increment is awarded by the Victorian Tertiary Admissions Centre (VTAC). Further information can be found on the VTAC website: www.vtac.edu.au

CREDIT IN THE VCE VM

This program is suitable for the VCE VM course.

AWARD

On successful completion of this program students will be awarded 22682VIC Certificate II Electrotechnology Studies. Students who partially complete this qualification will receive a statement of attainment listing units successfully completed.

Current as at March 2026

Course Outline: Units of Competency

HLTAID011 Provide first aid *

CPCWHS1001 Prepare to work safely in the construction industry

UEECD0007 Apply work health and safety regulations, codes and practices in the workplace

UEECD0020 Fix and secure electrotechnology equipment

VU23736 Prepare for work in the Electrotechnology industry

UEECD0042 Solve problems in ELV single path circuits

UEERA0035 Establish the basic operating conditions of air conditioning systems

VU23737 Use test instruments in the electrotechnology industry

VU23737 Use test instruments in the electrotechnology industry

VU23739 Carry out basic network cabling for extra low voltage equipment and devices

UEECD0019 Fabricate, assemble and dismantle utilities industry components

UEECD0052 Use routine equipment/plant/technologies in an energy sector environment

VU23738 Plan and complete a basic electrotechnology project

VU23480 Perform intermediate engineering computations

VU23735 Install a sustainable extra low voltage energy power system

VU23740 Perform energy sector installations of Extra Low Voltage (ELV) single path circuits

*Delivered by external provider at Ranges TEC

REQUIREMENTS

- Steel cap, slip resistant, leather boots
- Work pants, long or short
- Hi-visibility cotton shirt with collar (non-flammable)
- Banded ear plugs
- Safety glasses

All other necessary equipment and PPE will be available for student use. If you attend Ranges TEC classes without the appropriate clothing or PPE items you will be excluded from practical classes.

Stationery:

Pencil case with pens, pencils eraser, sharpener, highlighter & ruler.

A4 4 ring binder (28-50ml) and binder book

COURSE COST

Full time Ranges TEC students: Fees of Cert II courses delivered at Ranges TEC are included in the overall Ranges TEC tuition & materials fee.

(1 day per week) VET students:

Tuition fee: **\$2990pa** and Materials fee: **\$600pa.*** (*2026 Fees, may be subject to change)

Ranges TEC will either invoice students directly or students will receive payment instructions via their home schools. (Most home schools have their own arrangements for invoicing students. Please refer to your home school for details).

If more than one year level of a Cert II course is undertaken, extra fees will apply.

ENROLMENT

Full time Ranges TEC students:

Talk to the Ranges TEC Director or your home room teacher about your Cert II course preference and how that fits with your overall learning plan at Ranges TEC.

(1 day per week) VET students:

Contact the VET coordinator at your home school.

Students who are not from VET Cluster schools can contact Ranges TEC office directly: Ph. 9738 7100.

If there are places available, you will be invited to submit a Ranges TEC enrolment form and attend orientation in December, prior to the beginning of the course.

DELIVERY

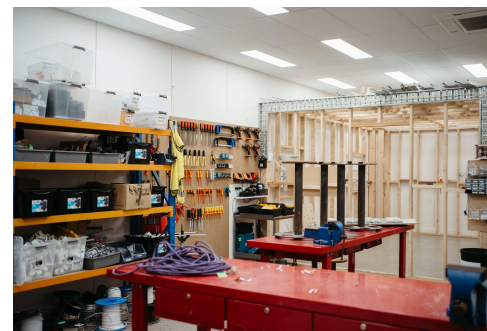
Location: 9 Hightech Place, Lilydale. 3140.

When: Ranges TEC delivers VET courses on Wednesday and Thursdays. Course times are announced in September each year.

Course duration: 62 weeks (over 8 school terms).

At Ranges TEC you can complete a certificate II as part of the VCE or VCE VM (Vocational Major).

Ranges TEC is a school for students in Years 10, 11 and 12 with purpose built trade training facilities. Ranges TEC offers a unique learning experience in a supportive Christian environment.



RECOGNITION OF PRIOR LEARNING Students who feel that they have previous education or work skills may apply to the VET Coordinator to have their current competencies assessed. More information about RPL is available in the Ranges TEC Student Handbook

Recognition of AQF Qualifications & Statements of Attainment If you have already successfully completed a unit/course at another RTO you don't have to do it again. One of the most important features of the Australian Quality Training Framework is the mutual recognition of training organisations and qualifications including Statements of Attainment. As a registered training organisation Ranges TEC must accept the credentials issued by another registered training organisation based in any State/Territory of Australia. Ranges TEC undertakes to ensure that all Certificates and Statements of Attainment issued by any other registered training organisation are accepted as valid. Equally, the Qualifications and Statements of Attainment issued by Ranges TEC will be recognised Australia wide under these arrangements.

COMPLAINTS POLICY Students who feel that they have been unfairly treated as part of their enrolment or during their studies may access the Complaints and Appeals policy through the Ranges TEC website:

EQUITY AND ACCESS Equity is a term used to cover issues relating to access to VET, participation in VET, and achievement of outcomes in VET. Equity issues range from providing a supportive learning environment to adjusting assessments to meet individual circumstances. Basically, equity refers to the ability to achieve results in training and to receive training in an inclusive environment with inclusive materials. An inclusive environment or set of materials is one that acknowledges and values the differences between people and cultures. It includes rather than excludes.

Ranges TEC is committed to ensuring that all prospective clients are able to participate and have the opportunity to build on their potential, make choices and receive responsive and appropriate products and services. Whilst the destination for all learners may be the same (i.e. demonstrating competence to the standard required), the journey may be different. Ranges TEC aims to ensure equity by being flexible and responsive and avoiding a 'one size fits all' solution to training and assessment.

Current as at March 2026